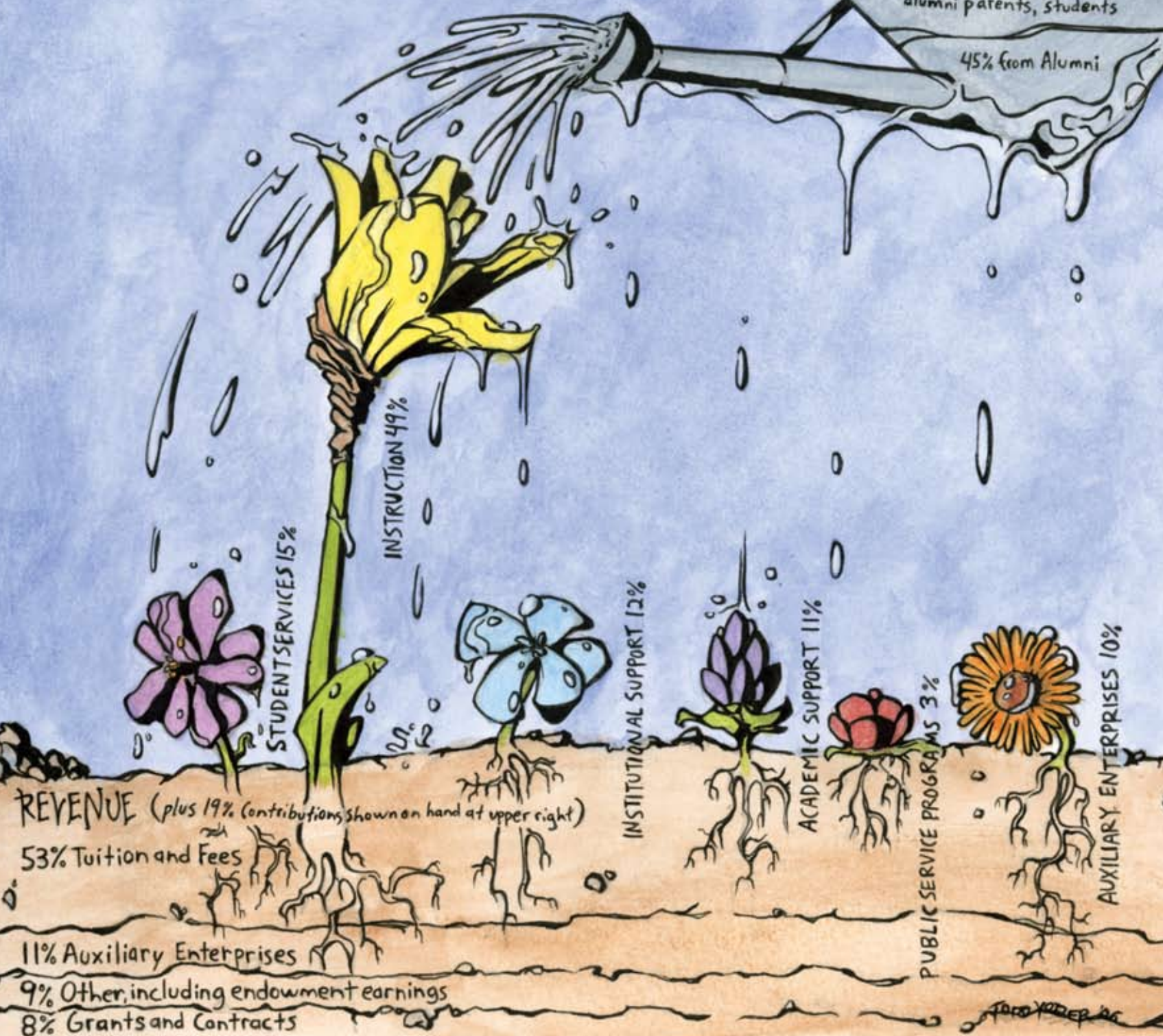


Nourishing the EMU Garden



Tony Yoder '06

EMU Finances at a Glance

FOR THE FISCAL YEARS ENDING JUNE 30, 2006 AND 2005

	2005-06	2004-05
CONTRIBUTIONS		
For use where most needed (e.g., the various annual funds and undesignated gifts)	1,811,395	1,736,113
For designated purposes		
Endowment	1,719,228	395,275
Capital projects	585,133	648,441
Other designated purposes	1,732,774	329,123
Total contributions	5,848,530	3,108,952
OPERATING REVENUES		
Tuition and fees	16,015,720	15,268,711
Contributions (same as “total contributions” above)	5,848,530	3,108,952
Grants and contracts (government and nongovernment)	2,500,747	2,523,040
Auxiliary enterprises (such as room and board, apt. rentals, book store)	3,175,622	3,022,218
Other income (such as summer conference income, endowment earnings)	2,843,674	2,613,861
Total revenue and gains	30,384,293	26,536,782
OPERATING EXPENSES/LOSSES		
Instruction	13,452,702	12,940,339
Academic support	3,152,176	3,023,895
Student services	4,054,588	3,911,643
Public service programs	744,920	693,481
Auxiliary enterprises	2,817,634	2,652,795
Institutional support	3,404,446	3,473,624
Total operating expenses	27,626,466	26,695,777
Change in net assets from operations (the difference between operating revenues and operating expenses)	2,757,827	(158,995)
NON-OPERATING ACTIVITIES	1,442,964	760,262
NET ASSETS		
Beginning	43,112,078	42,510,811
Ending	47,312,869	43,112,078

A complete financial statement for these years will be provided upon request. Simply e-mail your request to: Crossroads@emu.edu.