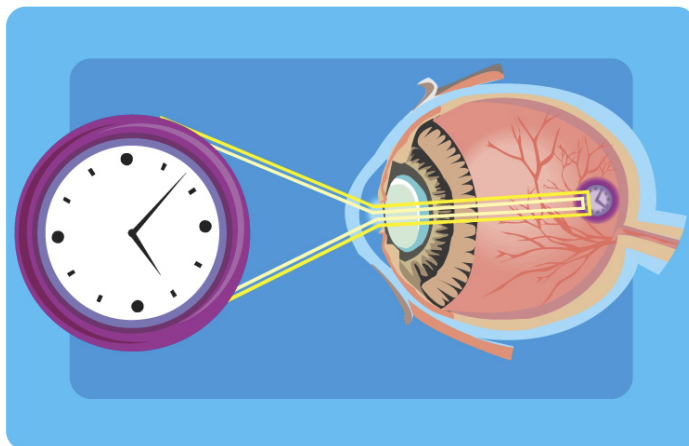


Pre Professional Health Sciences Calendar

With Words of Wisdom!

This general time line is designed for students who are majoring in biology or biochemistry; students with other majors should consult with a PPHS advisor for specific recommendations or variations.



First Year

"The fear of the LORD is the beginning of wisdom, and knowledge of the Holy One is understanding." Prov 9:10

- Contact a PPHS advisor (Dr. Roman Miller, millerj@emu.edu, or Dr. Greta Ann Herin, gretaann.herin@emu.edu) and indicate your interest and intention to participate in EMU's PPHS program. (A simple [PPHS Enrollment Form](#) is available online.)
- Enroll in basic required biology and chemistry courses (typically, BIOL 171 and BIOL 222; and CHEM 221 & 232) and earn a mix of A's and B's so that your science GPA is minimally 3.0 (premedical 3.5) at the end of the academic year. These courses are considerably more difficult than high school courses; students who choose not to take academics seriously typically do not gain entrance into professional health science schools. Quality students will "over study" to ensure success. (See the [Study Techniques for Science Courses](#) for tips to succeed.)
- Complete the global village writing requirement during this first year.
- Assuming that biology or biochemistry is your declared major, consider a non-science minor to complement your major course offerings.
- Join the Preprofessional Health Science Society; attend the scheduled meetings and participate in other club activities.
- Research various PPHS programs or careers and select the one that captivates your interest. Follow through by identifying several professional schools that offer the terminal degree for this program and note the prerequisite requirements for admission.
- During the summer after the first year, plan to participate in at least one health related or volunteer opportunity that involves interaction with people.

Yearly Activities following Year One

"He gives strength to the weary and increases the power of the weak." Isa. 40:29

- Do your best academically in classes.
- Participate in the PPHS society.
- Enhance your interest in science and health by reading science-related articles in popular magazines and research articles in journals.
- Research information related to your chosen health field as well as the programs in potential professional health science schools.
- Continue to gain and document research, clinical, and volunteer experiences.
- Develop positive relationships with professors in courses.

Second Year

“The heart of the discerning acquires knowledge; the ears of the wise seek it out.” Prov. 18:15

- Continue the requisite sequence of science courses; maintaining a minimal science GPA of 3.0 each semester; if your science GPA drops below this value, schedule an evaluation session with your academic advisor.
- Plan and begin gaining verifiable experiences in three areas: (1) clinical experiences in the PPHS program of interest; (2) volunteer experiences that highlight involvement with people; (3) and a research experience that reflects your aptitude for science. (Enrolling in a collaborative research program with a biology or chemistry professor or planning for a summer off-campus research practicum is highly recommended.)
- Take a couple of courses in your minor while continuing with courses in your major and required courses in the global village curriculum.
- Plan the specific cross-cultural program which you will experience during your third or fourth year at EMU.

Third Year

“Whatever your hand finds to do, do it with all your might, for in the grave, where you are going, there is neither working nor planning nor knowledge nor wisdom.” Ecc. 9:10

- After completing each significant volunteer experience or health-related practicum, ask your supervision to send a brief reference letter or email to the PPHS secretary (Cheryl Doss, dossc@emu.edu) for inclusion in your file.
- Select two to five “ideal professional health science schools” and obtain program information from these institutions.
- Review the requisite course requirements for entrance into two to five “ideal professional health science schools” that are matched to your abilities and record. Ensure that your academic course work will make you a viable applicant to these programs.
- After you have completed most of required major courses, prepare to take competency exams (MCAT, DAT, PCAT, OAT, GRE, etc) required for entrance into the desired health science program.
- Complete the PPHS Questionnaire and submit it to the PPHS secretary (Cheryl Doss, dossc@emu.edu) for inclusion in your file.
- Schedule an interview with the PPHS Committee by contacting the PPHS secretary (Cheryl Doss, dossc@emu.edu). Prior to this interview you must send the following four items to the PPHS committee:
 - Unofficial EMU transcript of courses showing that you have completed a minimum of 36 hours of science credits.
 - PPHS Questionnaire
 - Formal resume (one-two pages); we suggest that you work with the Director of Career Services (Helen Nafziger, careers@emu.edu) as you develop your resume.
 - Formal essay (200-400 words) describing why you wish to become a health professions practitioner. You should thoughtfully reflect over your collegiate events including cross-cultural, clinical, research, and faith experiences and meaningfully weave them into your essay.

Summer Following Third Year

*"So I say to you: Ask and it will be given to you; seek and you will find; **knock** and the door will be opened to you." Luke 11:9*

- After completing the PPHS Committee interview and receiving competitive scores on the competency entrance exam, you are ready to acquire, and fill out, and submit the entrance application form for health science school.
- Request letters of reference for health science schools from the PPHS committee as well as at least one reference letter from a non-science faculty person.

Fourth Year

"The end of a matter is better than its beginning, and patience is better than pride." Ecc 7:8

- Finish applications, if not completed during the summer.
- Keep your GPA at competitive levels.
- If invited scheduled interviews at health science schools; schedule prior meetings with your academic advisor and the Director of Career Services (Helen Nafziger, careers@emu.edu) for interview tips.
- Make certain that you will complete all graduation requirements.
- After receiving acceptances from your choice professional health science school, celebrate with your friends and professors. (A ceremonial "fruit plate" shared with your academic professors is very "appropriate" and always appreciated!)